

# ichroma™ Vitamin D Neo

## Ultimate Vitamin D test A leader among Vitamin D test devices

### Rapid procedure

- Total 12 min to get the result

### Various sample type

- Whole blood / Serum / Plasma

### Wide working range

- 5.0 – 100.0 ng/mL

### Maximize user convenience

- Simple steps with high accuracy
- Room temperature storage



## What is Vitamin D?

Vitamin D, otherwise known as the "Sunshine Vitamin", plays a major role in helping people achieve good health, including maintaining strong bones and adequate calcium levels in the blood.

Unfortunately, more people are working longer hours indoors and thus limiting their sun exposure. Reports now show that over 1 billion people worldwide are vitamin D deficient.<sup>1</sup>

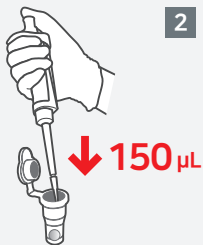
While vitamin D deficiency has long been associated with increased risk of rickets and osteoporosis, newer studies show an association with inadequate levels and an increased risk for cardiovascular and autoimmune disease, along with certain types of cancer.<sup>1</sup>

## Benefits of testing with ichroma™ Vitamin D Neo

A test result deliver to patients in 12 minutes – while patients are still at the physician's office, compared to hours later if a sample must be sent out to traditional laboratories.

By using various sample type, you can test without the preparation of the sample centrifugation, and we ensure the performance with high accuracy and reliable result.

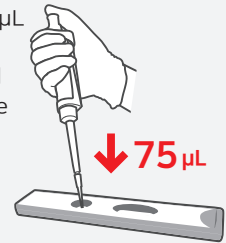
- 1** Transfer 150  $\mu\text{L}$  of extraction buffer using a pipette to a detector tube



- 2** Add 30  $\mu\text{L}$  sample using a pipette to a detector tube



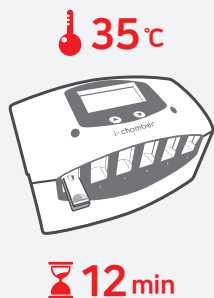
- 3** Pipette out 75  $\mu\text{L}$  and load it into the sample well on the cartridge



### ichroma™ II

The multi mode test allows the throughput up to 40 tests per hour

- 4** Wait 12 minutes



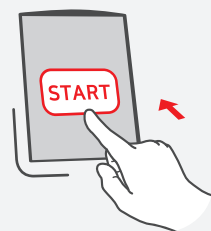
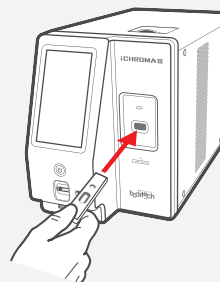
- 5** Insert the test cartridge. Read the test result



### ichroma™ III

The elevation system allows operators to test with minimum effort

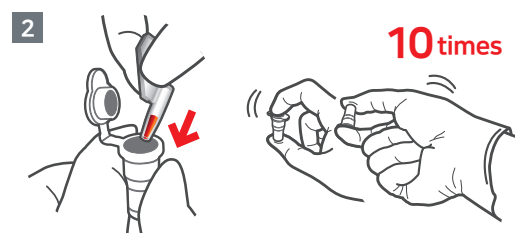
- 4** Insert the cartridge into the device and press 'start'. Result will display automatically after 12 min



## Capillary tube: Alternative way of collecting sample

A unique invention of Boditech's Capillary tube is used for small volume collection.

- You can directly collect the sample with our Capillary tube and simply put the tube into the detector tube. No pipetting required.
- This invention brilliantly combines sample collecting and sample processing all at once.



Put the capillary tube into the detector tube and mix the sample thoroughly by shaking it about 10 times



## ichroma™ Vitamin D Neo can apply to

### iCHROMA II

A compact and easy-to-use, fluorescence based POCT immunoassay analyzer.

- High performance with reliability
- Small, compact & light
- Multi test function
- Battery & AC operated
- LIS/HIS compatible



### iCHROMA III

High-throughput immuno-analyzer that enables simultaneous testing for various parameters.

- Random access for various parameters
- Increased throughput
- Patient ID handwriting
- Automatic incubation, reading and disposal of cartridge



**Versatile device can help you to check other Vitamin D-related biomarkers at point!**

### Specification

Assay time	12 min (one step procedure)
Sample type	Whole blood / Serum / Plasma
Sample volume	30 µL
Measuring range	5.0 – 100.0 ng/mL
Storage conditions	2-30 °C for whole package
Controls	Available



### Ordering information

Product	Cat. No.	Size	Storage	Shelf Life
ichroma™ Vitamin D Neo	CFPC-133	25 T/Kit	2-30 °C	20 months
Boditech Vitamin D control	CFPO-102	1 vial	2-8 °C	12 months
ichroma™ II	FPRR021	1 set	Room temperature	
ichroma™ III	FPRR037	1 set	Room temperature	
i-chamber	FPRR009	1 set	Room temperature	

\* Additional thermal chamber is needed for ichroma™ II