



ichroma<sup>α</sup><sup>TM</sup>

# Dengue

- ✓ Accuracy of ELISA test
- ✓ Fast result
- ✓ Easy interpretation



# ichroma<sup>TM</sup> Dengue



**ichroma<sup>TM</sup> Dengue IgG/IgM and NS1 Ag are the high accuracy qualitative dengue test solution.**

ichroma<sup>TM</sup> Dengue IgG/IgM and NS1 Ag is a qualitative analytic reagent for the dengue IgG/IgM and NS1 antigen test based on high sensitivity fluorescence immunoassay (FIA). Innovative technology enables ichroma<sup>TM</sup> Dengue accuracy of ELISA test, with easy and simple procedure of rapid test.

ichroma<sup>TM</sup> Dengue provides Dengue antigen and antibody test to cover the whole the Dengue infection panel, primary and secondary infection.

With ichroma II reader, ichroma<sup>TM</sup> Dengue IgG/IgM and NS1 Ag test provide fast and easy to interpret result.

ichroma<sup>TM</sup> Dengue IgG/IgM and NS1 Ag is game changer of point of care devices, providing compact and fast test result, with the accuracy of auto-analyzer.

**Accurate**



**Fast**



**Simple**

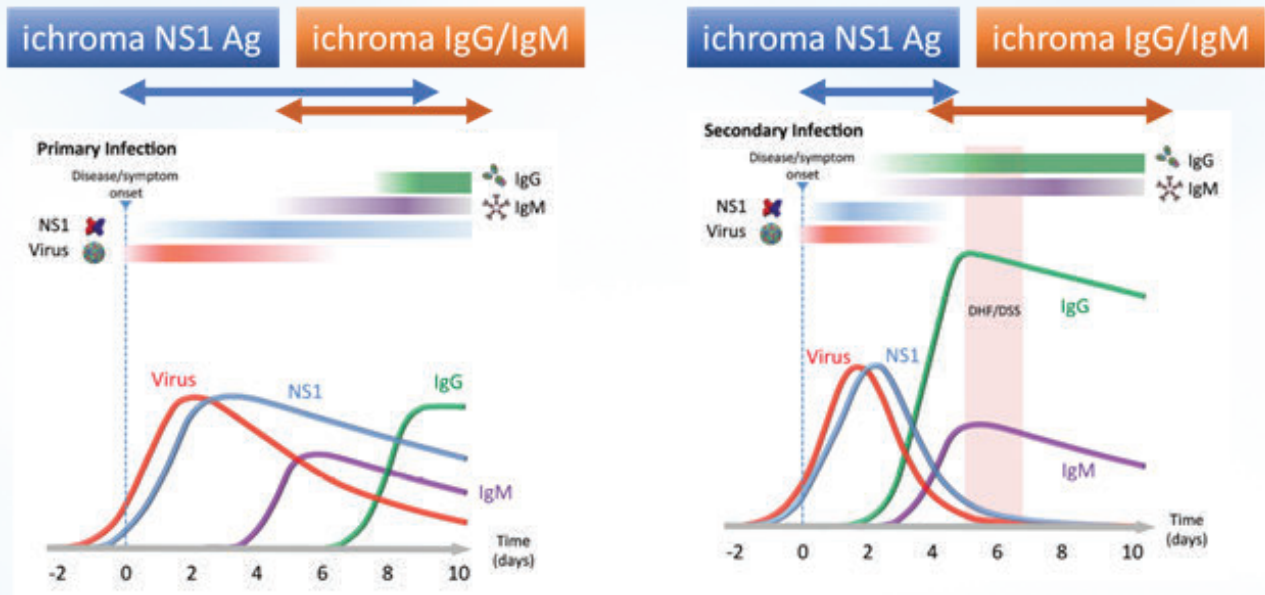


## ichroma<sup>TM</sup> Dengue IgG/IgM and NS1 Ag

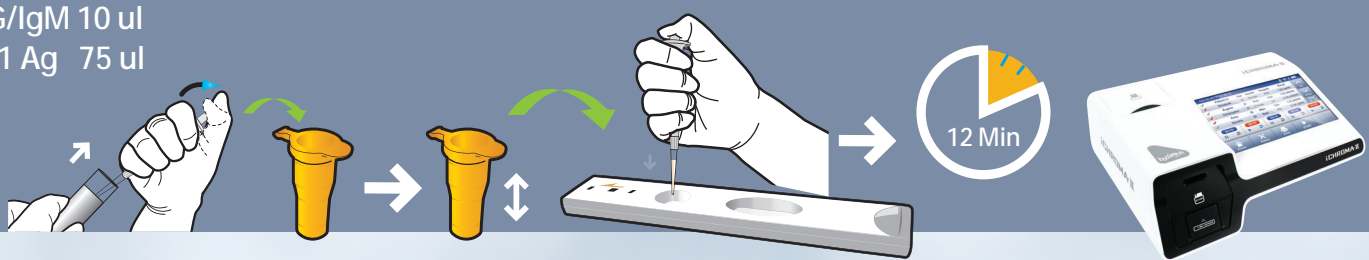
- ▶ **Improved sensitivity:**  
High sensitivity fluorescence technology boasts 100 times of conventional fluorescence signal. It provides sensitivity of auto-analyzer.
- ▶ **Easy result interpretation:**  
Objective test result with device.
- ▶ **Compact:**  
Compact device can be used ubiquitously.
- ▶ **Simple process:**  
Simple as conventional RDT test. Just mix whole blood with buffer and load.
- ▶ **Fast result:**  
With 12 min of reaction time, test result right next to patient.



# ichroma™ Dengue



IgG/IgM 10 ul  
NS1 Ag 75 ul



Item	Sensitivity	Specificity
ichroma™ Dengue IgG/IgM	IgM: 95.4%, IgG: 100%	IgM: 98.7%, IgG: 100%
ichroma™ Dengue NS1 Ag	95.9%	98.2%

Item	ichroma™ Dengue IgG/IgM	ichroma™ Dengue NS1 Ag
Cat #	CFPC-60	CFPC-62
Test principle	FIA	FIA
Test type	Qualitative	Qualitative
Time	< 12 Min.	< 12 Min.
Sample	Serum, Plasma, Whole blood	Serum, Plasma, Whole blood
Sample vol.	10 µl	75 µl
Storage	Cartridge: 4~30 °C DB & Diluent: 2~8 °C	Cartridge: 4~30 °C DB & Diluent: 2~8 °C